

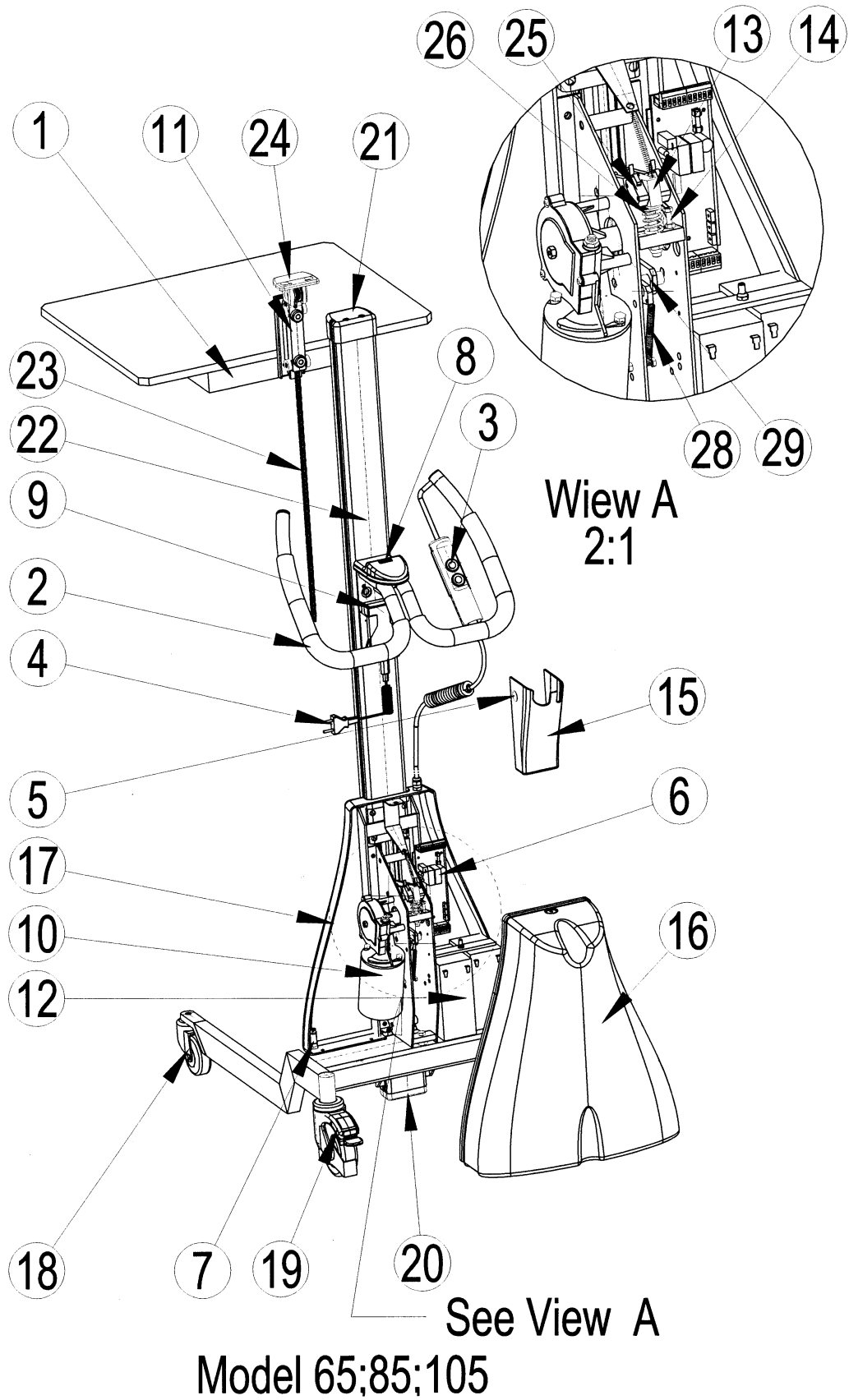


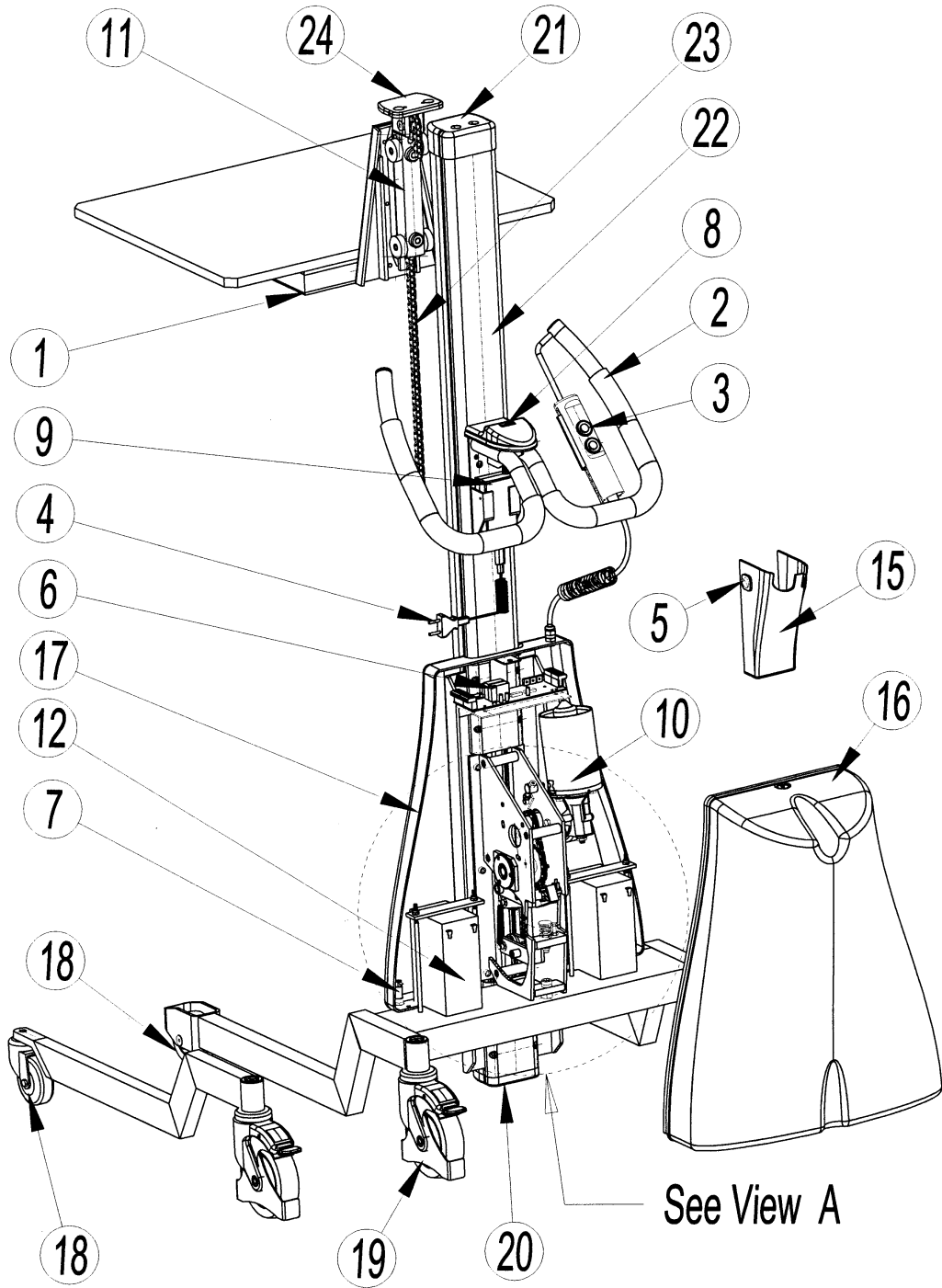
NM WORK POSITIONER

INSTRUCTIONS FOR OPERATING, SAFETY AND MAINTENANCE
MODEL NM 65 - NM 250

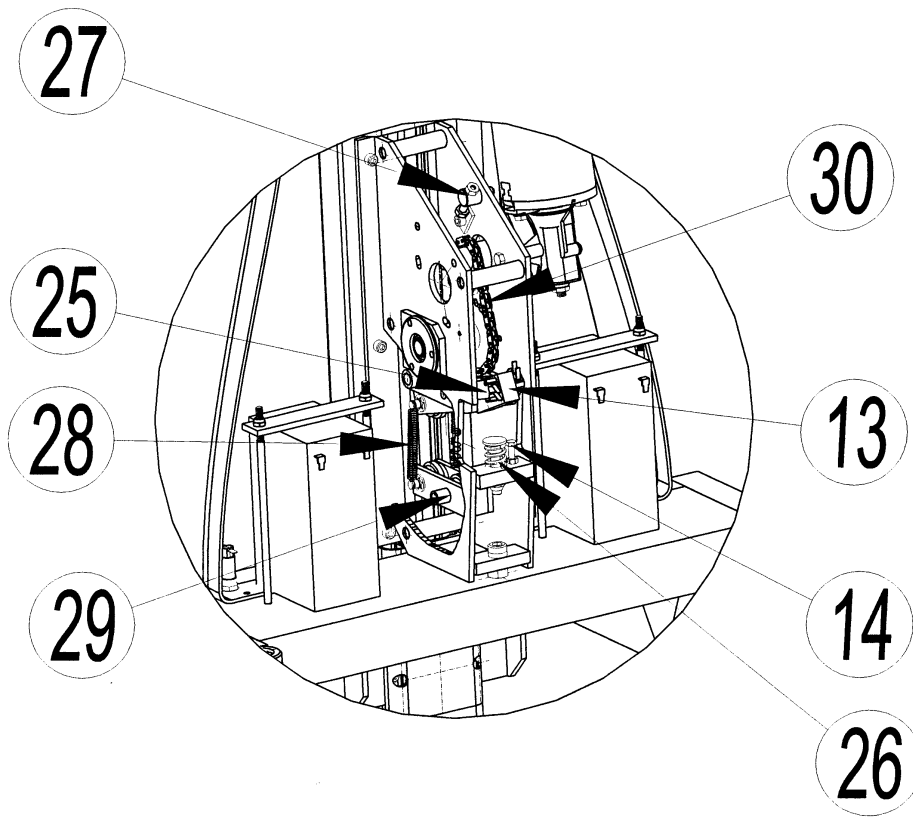
INDEX

3-8.	POSITION DESCRIPTIONS
9.	INSTRUCTIONS AND SAFETY
10.	MANUAL
11.	BATTERY & CHARGING
12.	SERVICE AND ADJUSTMENT INSTRUCTIONS
13.	USING THE PLATFORM QUICK BRACKET
14.	CHANGING THE SAFETY BELT
15.	SPARE PARTS AND ASSEMBLING
16.	CHANGING THE NM205 MOTOR
17-26.	TECHNICAL DRAWINGS
27-30.	SPARE PARTS
31.	DECLARATION OF CONFORMITY



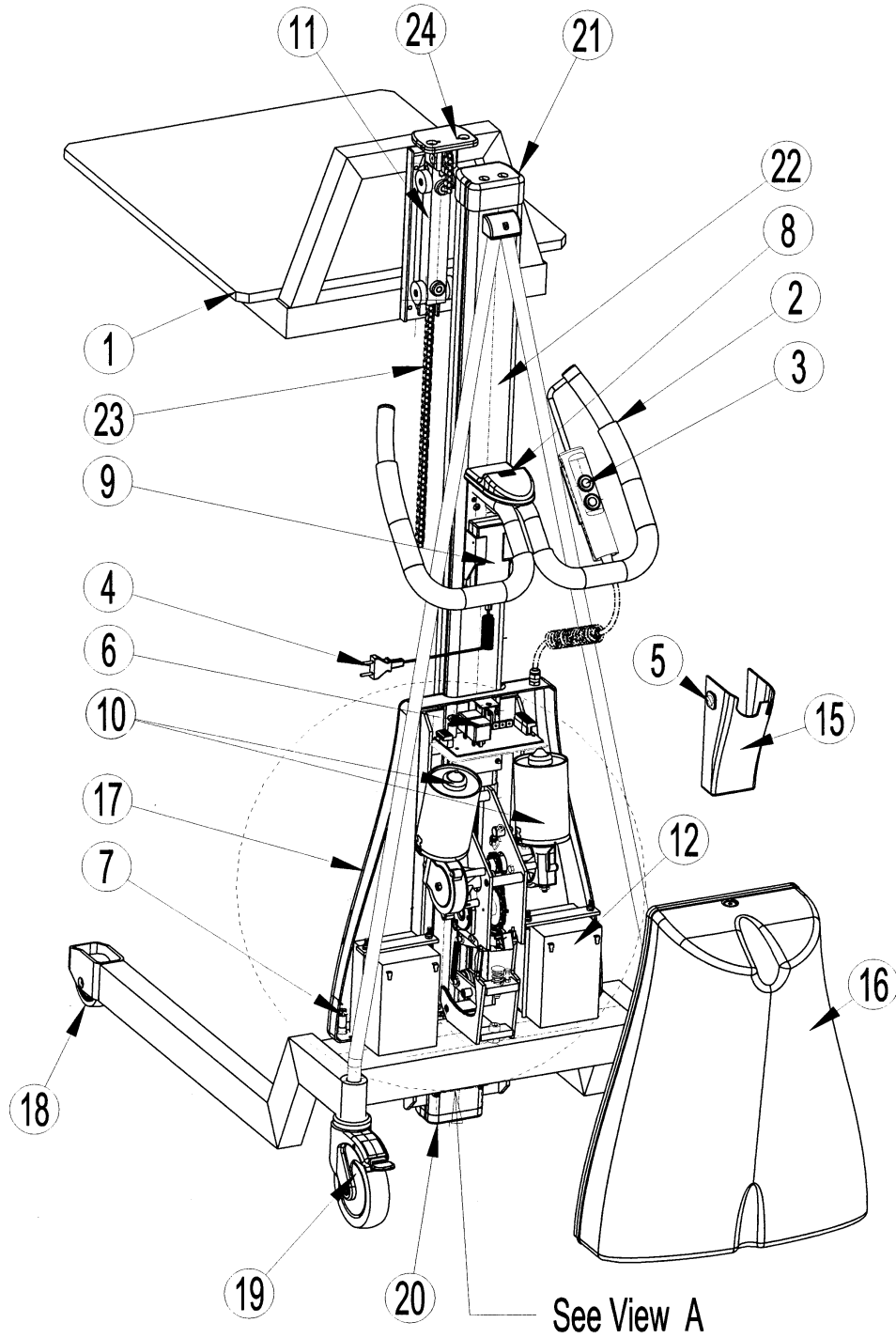


Model 155

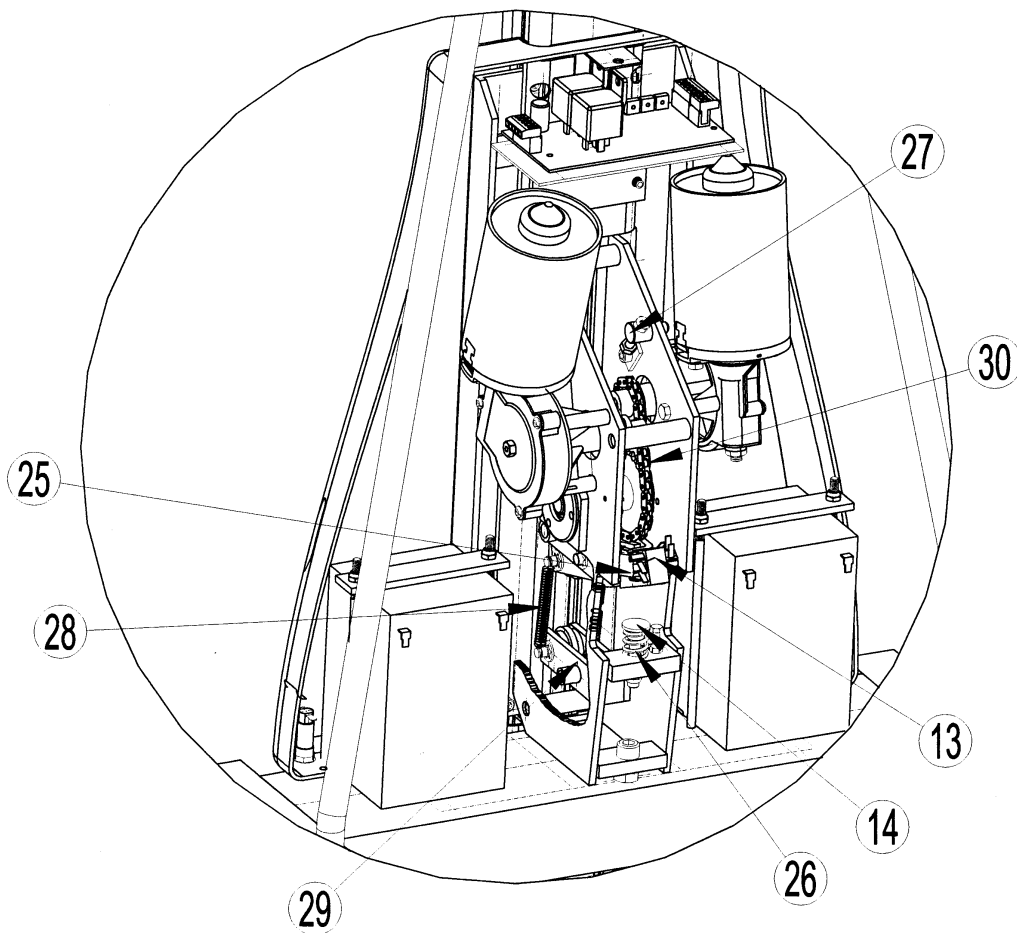


Wiew A
1:1

Model 155



Model 205 ; 250



Wiew A
2:1

Model 205; 250

POSITION DESCRIPTIONS

1. HOIST PLATFORM (FORK)
2. HANDLE
3. RIDE SWITCH
4. CHARGING CABLE
5. MAIN SWITCH
6. CONTROL PANEL
7. FUSE
8. CHARGING INDICATOR
9. CHARGER
10. MOTOR
11. HOIST CART
12. BATTERY
13. LOAD REGULATOR
14. WEIGHT REGULATION BOLT
15. PLASTIC COVER
16. PLASTIC BOX
17. PLASTIC WALL
18. FRONT WHEELS
19. REAR WHEELS
20. BOTTOM END OF MAST
21. PLASTIC COVER OF MAST TIP
22. ALUMINIUM MAST
23. HOIST CHAIN
24. MAST TIP
25. MICROSWITCH
26. FORCE SPRING
27. TRANSMISSION CHAIN TIGHTENER
28. CHAIN TIGHTENING SPRING
29. CHAIN TIGHTENER
30. TRANSMISSION CHAIN

INSTRUCTIONS AND SAFETY

The CE-sign on the minilift guarantees the accordance with the valid EU directives. The CE declaration will be sent to the buyer with the minilift.

The hoist platform moves up and down, when using the arrow-marked buttons (Up; S down) on the ride switch (position 3). The ride switch is near the handle and is connected to the minilift via a spiral cable. The switch can be operated both while attached to the minilift and while holding it in the hand, separated from the minilift.

When operating the ride switch, some safety requirements are to be known:

1. While hosting and lowering goods, both the rear wheels of the minilift must be in a locked position to ensure the stability of the minilift while handling goods. The goods must be placed on the platform safely.
2. The outer measurements of the goods must not exceed the outer measurements of the hoist platform, i.e. the goods must not extend over the platform's edges. Goods with outer measurements smaller than the platform must be placed in the middle of it.
3. The minilift can only be moved, when the platform with the goods is set at the lowest position. The weight of the goods must not exceed the weight limit of the given minilift. A sign showing the maximum weight limit is stuck to the cover of the minilift. The minilift is equipped with a limiter, which stops the minilift from working when the load weight exceeds the maximum limit.
4. Do not stand or work under the minilift when the platform is lifted with goods on it!
5. Do not lift goods on slopes. When goods need to be moved between areas, the maximum slope can be 2%.
6. We recommend using safety footwear while operating the minilift.

MANUAL

MAIN SWITCH

The main switch of the minilift is on the left side of the handle housing (position 5), and is marked with the signs ON and OFF. Switching must be done manually. When the minilift is not used for a while, the switch must be turned to OFF, as a result the hoist platform can not be moved.

HANDLE

The minilift is moved by holding the handle (position 2) and pushing it in front of you.

BATTERY

The battery is sealed and non-serviceable, which guarantees a risk-free transportation of the minilift in any position. The batteries for 65-155 kg minilifts are 24V, 7Ah. The battery for the 205 kg minilift is 24V, 124h.

CHARGER

The battery charger is fully automatic. The battery charger for the minilifts is 1,2 N100-240 VAC and is installed in the minilift's handle housing. The battery charger is customized in accordance with the local voltage.

CHARGING INDICATOR

The charging indicator is on the handle housing. The same indicator shows the battery level while working with the minilift. When all the lights are on while operating the minilift, there is enough power in the battery. When half the indicator lights go out, the minilift must be recharged.

BATTERY & CHARGING

CHARGING THE BATTERIES

We recommend charging the batteries sufficiently, depending on the intensity of usage. **Operating the minilift with too little battery power may lead to battery spoilage.**

To charge the battery, connect the charging cable on the minilift to a mains network (100-240 vAc). During recharging the ON-OFF switch must be on the "ON" position.

To avoid environmental damage by old batteries, batteries must be taken to a toxic waste collection facility.

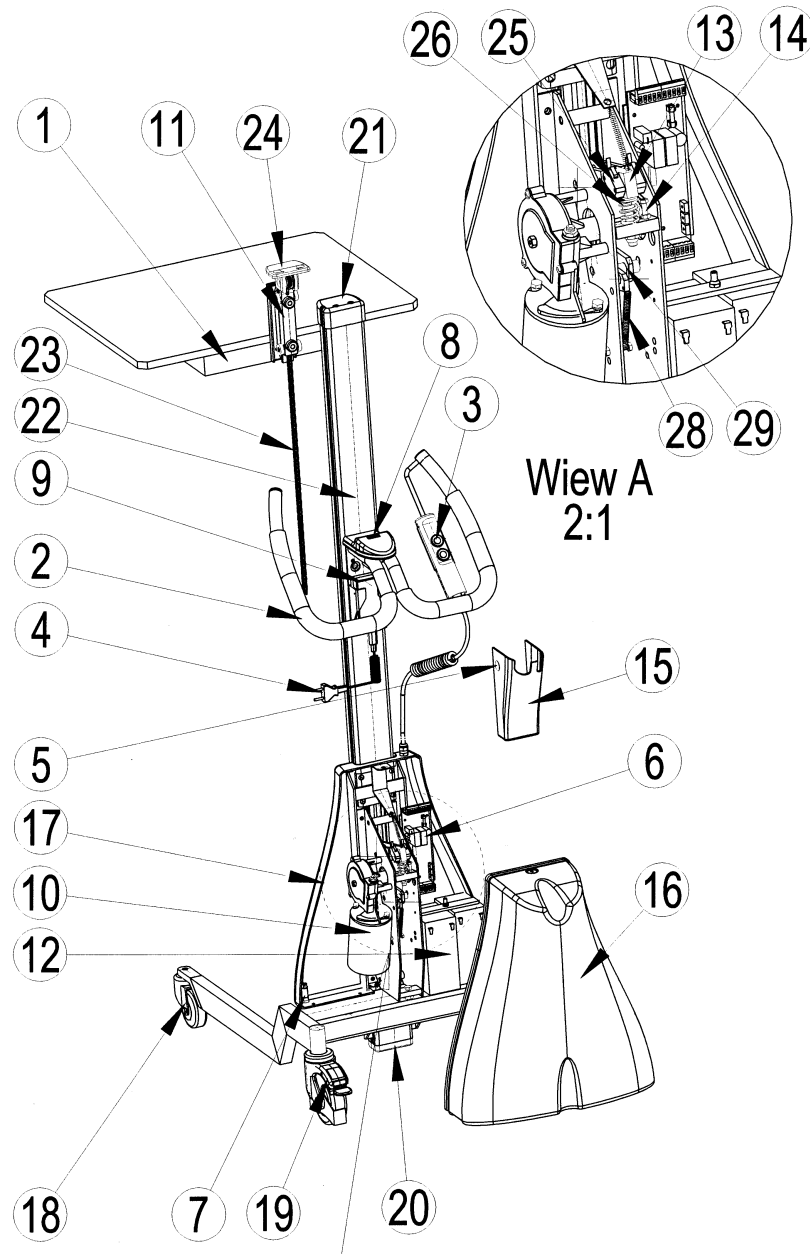
The owner of the minilift must vouch that only personnel who has been instructed about operation safely use their minilift.

CHECKLIST

When using the minilift, the following must be checked:.

- ✓ The chain is oiled with set intervals using chain oil.
- ✓ The spiral cables must be undamaged.
- ✓ The wheel brakes must be OK and the wheels and rolls must be clean.
- ✓ The weight limiter must work.
- ✓ The main switch must work.
- ✓ The warning signs must be untouched.

SERVICE AND ADJUSTMENT INSTRUCTIONS NM 65 - 85



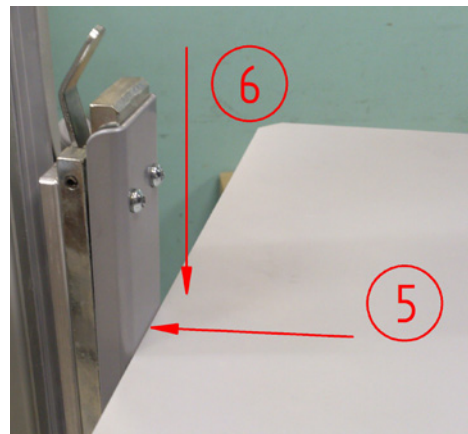
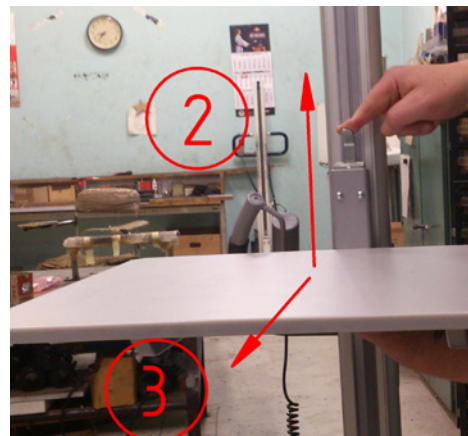
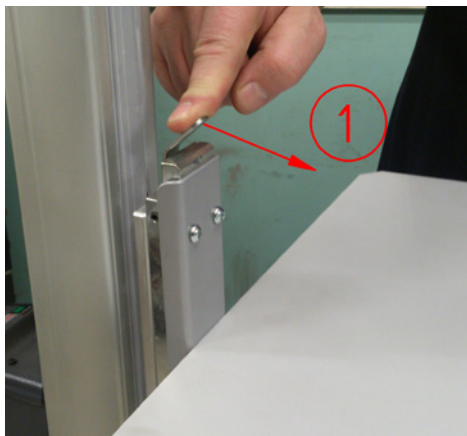
Pos	Service / Adjustments	Solution
4	Battery charging: (charging time: empty battery approx 8 h)	Charging is recommended after every work shift or any given opportunity.
6	Changing main board	Loose all 4 cables + quick connectors and 3 pcs plastic pins.
7	Changing the main fuse	Fuse 15A 32V 311
12	Changing battery	Demount the old battery, clean all connection cables before connecting the new battery. NOTE! Old batteries must be taken to a toxic waste collection facility.
14	Adjusting overload switch	Remove service hatch on the back of the trolley. Loose the locknut 10 mm and adjust overload switch until the work positioner manages the desired load, NOTE each work positioners max weight. Lock the locknut.

USING THE PLATFORM QUICK BRACKET

1. Pull the quick bracket pin "1" away from the mast.
2. While holding the pin at an outward position, lift the load platform "2" and remove from the lift "3".
3. remove from the lift "3".
4. Installing the load platform:
5. Align the locker pin of the load platform with the carrier "4" on the lift.
6. Push the load platform against the lift "5" and lower the lift platform "6".

NOTE!

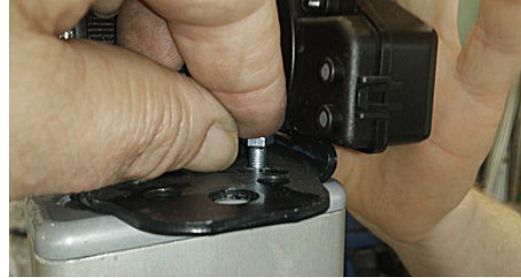
Check the locking! When you lift the load platform, it must not separate from the lift.



CHANGING THE SAFETY BELT



1. Open the lid of the belt. Pull out the belt from the reel until attachment holes are visible to enable inserting screws in place.



2. Insert and tighten screws.



3. Close the lid of the belt.



4. Pull out the belt to position as shown in photo above.



5. Assemble fork and let the screws penetrate holes of the seat belt.

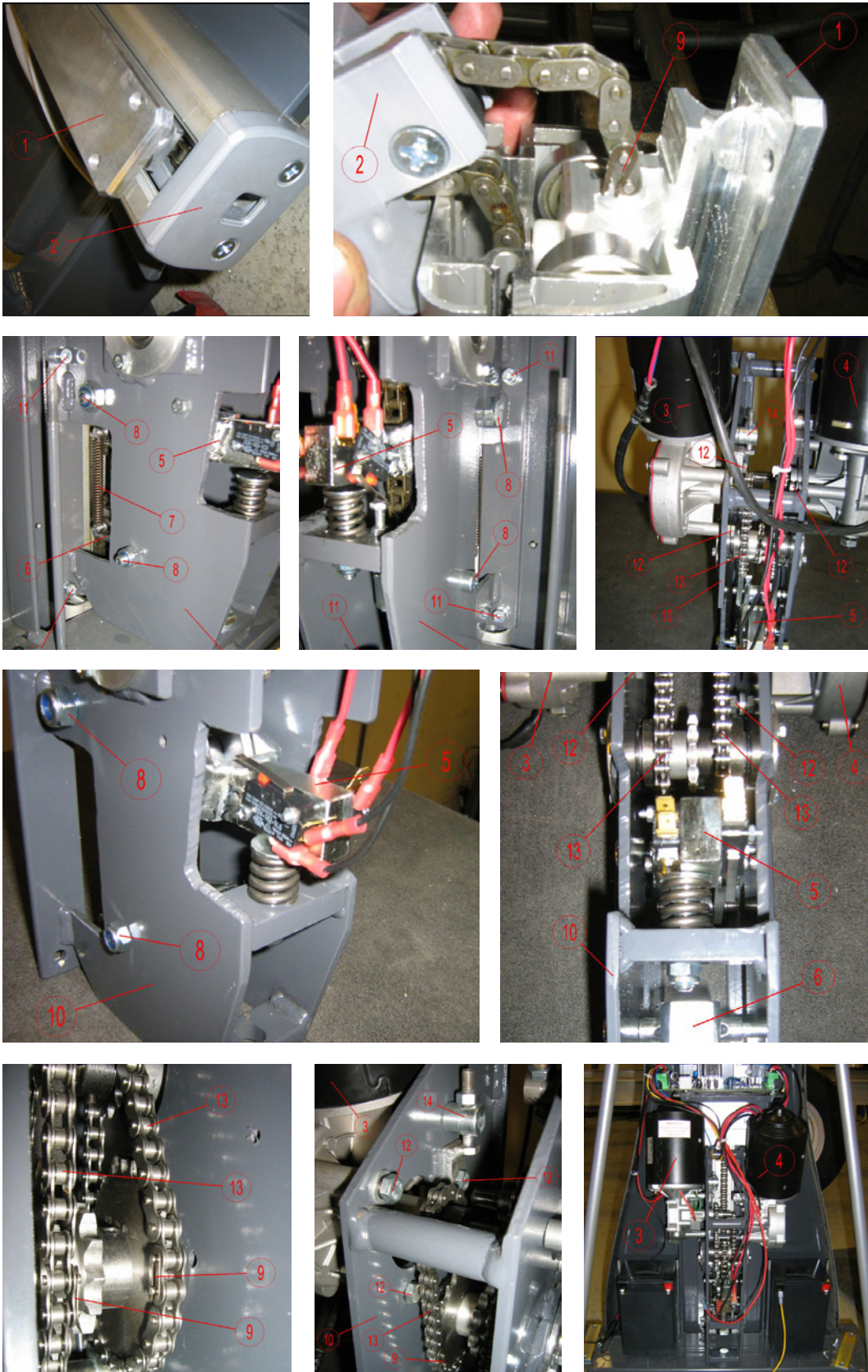
SPARE PARTS AND ASSEMBLING

CHANGING THE NM 205 - 250 MOTOR

1. Remove the fork/lift platform of the lift.
2. When possible, take the cart (1) to the bottom position so that there would be a small crack the cart and the bottom of the mast (2).
3. Remove the battery.
4. Detatch the cords of the engine (3, 4) and the swing (5), mark the cord colours and attachment places for easier re-assembly.
5. Remove the chain tension springs – 2pcs (7).
6. Remove the swing (5, 6) attachment bolts (8)
7. Remove the bottom of the mast (2).
8. Open the bottom chain lock (9) of the cart (1).
9. Unwind the bolts (11) of the motor pack (10) (7pcs).
10. Remove the motor pack from the lift.
11. Unwind the motor attachment bolts.
12. Remove the drive chains (13).
13. Remove the motors (3, 4).
- 14.
15. Place the left motor (3) and the left drive chain.
16. Tighten the left drive chain and the motor bolts.
17. Place the right motor (4) and the right drive chain.
18. Place the right drive chain and motor bolts.
19. Place the motor pack (10).
20. Pull the chain through the motor pack, so that when assembled, it would be possible to compare to the scheme supplied.
21. Attatch the chain to the cart (1).
22. Attatch the bottom of the mast (2).
23. Place the swings (5, 6) and tighten the bolts (8) so that the swings would move freely.
24. Place the chain tension bolts (7).
25. Place the cords and batteries for the swings and motors.
26. Place the fork (platform).
27. When needed, regulate the position of the motor chain wheels so that the drive chains would not rattle, tighten the chain wheel stop screws.

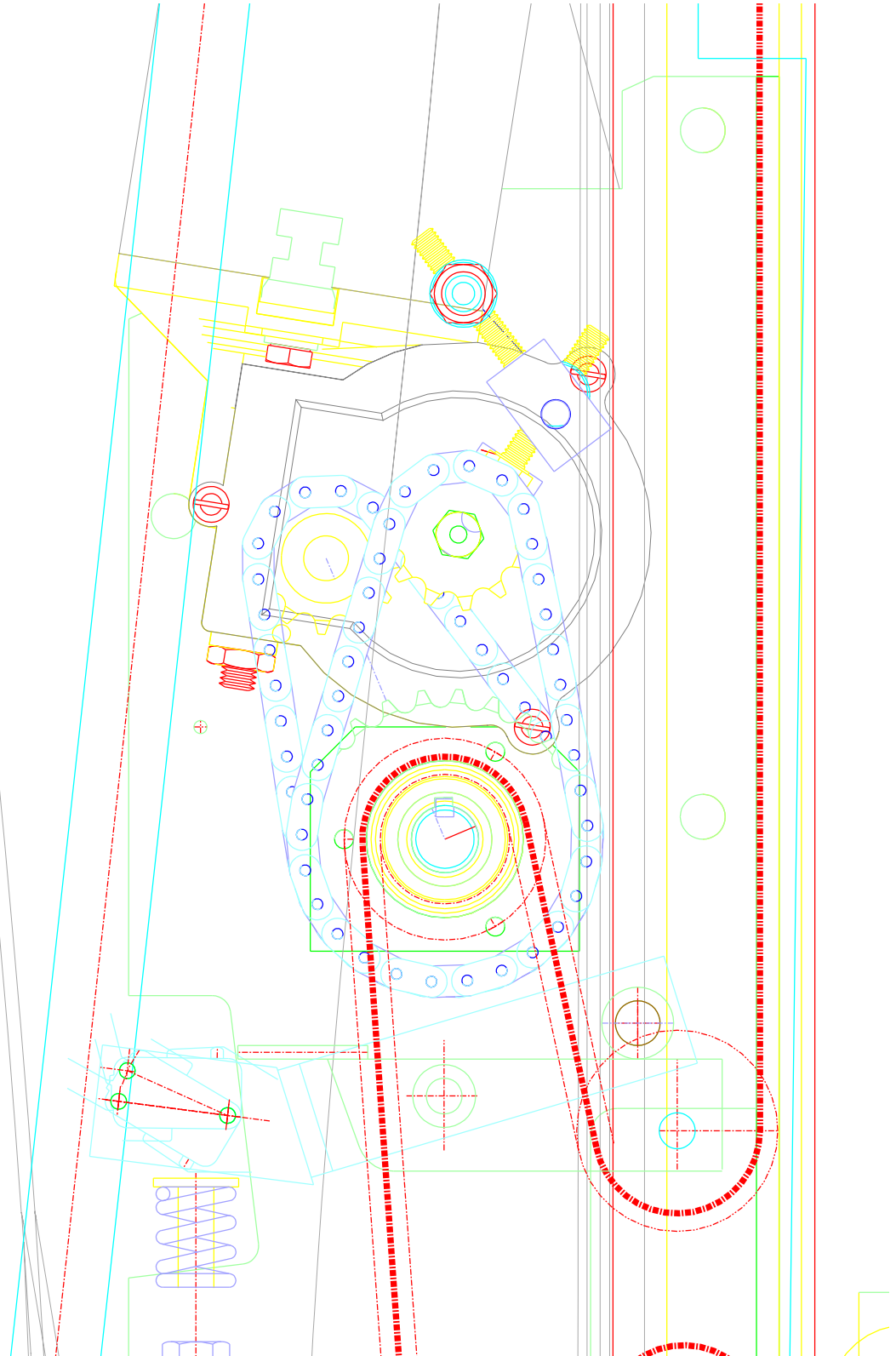
Photos on next page.

CHANGING THE NM 205 -250 MOTOR

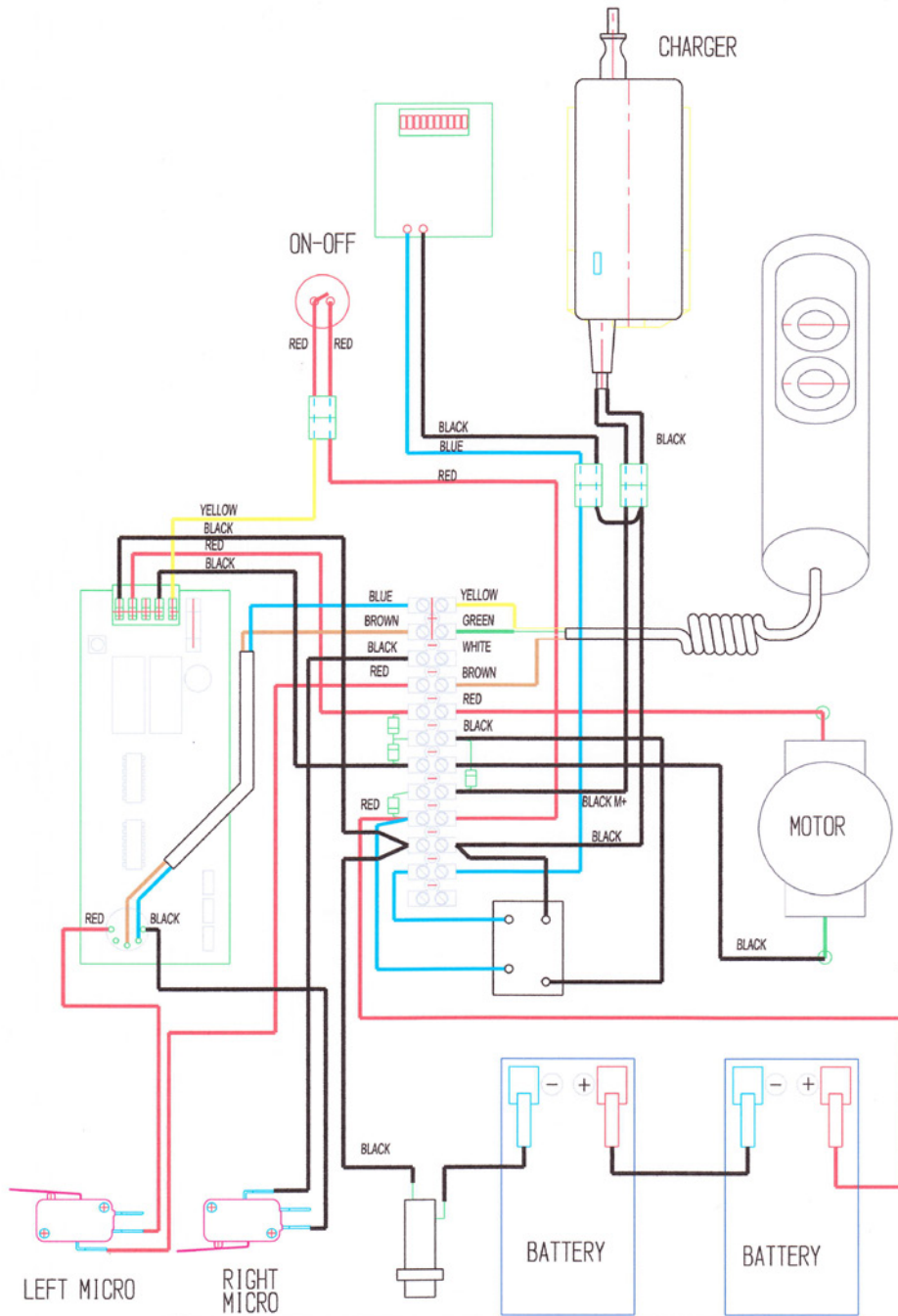


TECHNICAL DRAWING OF THE NM 205 -250 MOTOR

16. veebruar 2011. a. 9:36:34

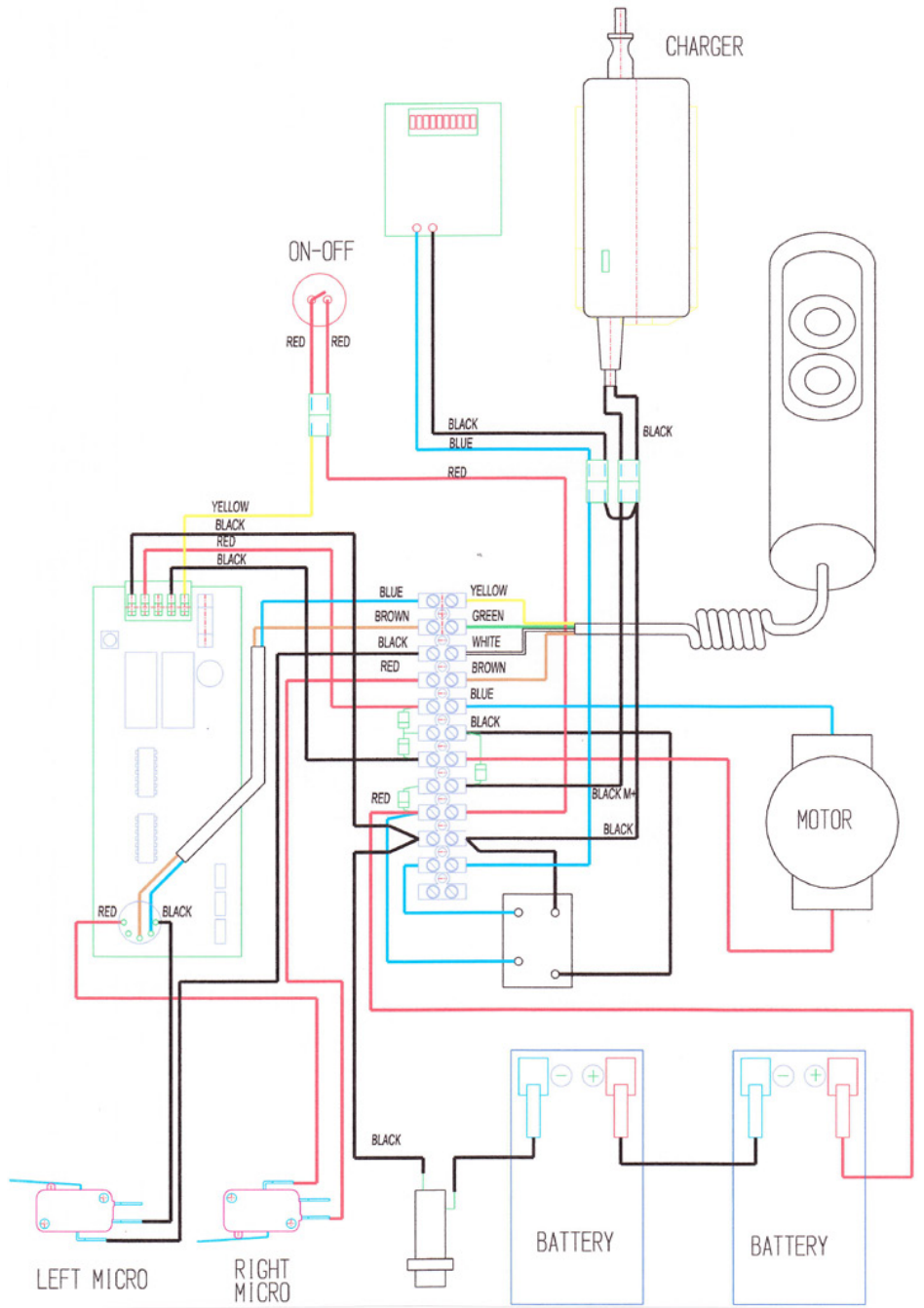


ELECTRICAL SCHEMATIC DRAWING NM 65 - 155



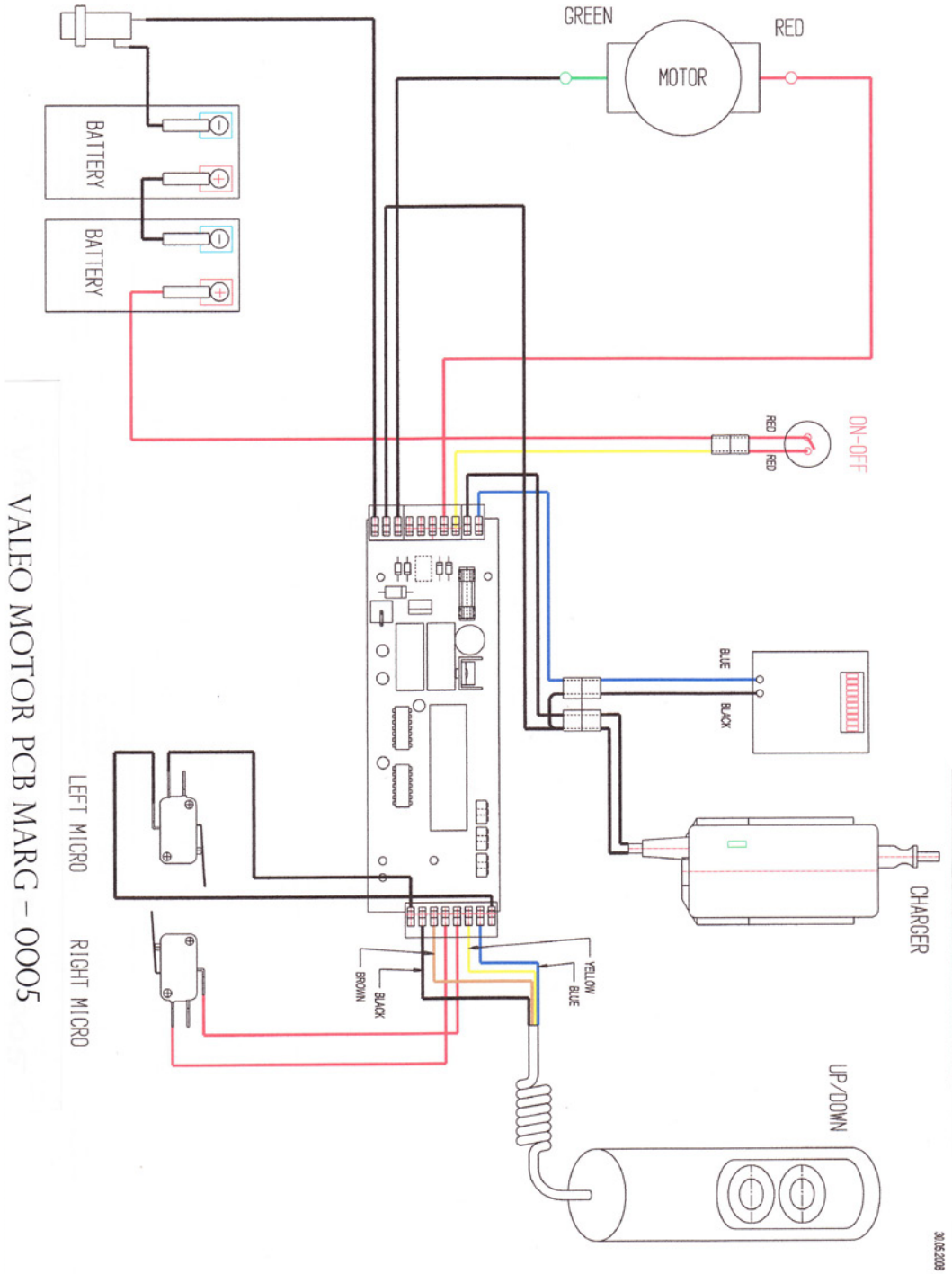
VALEO MOTOR PCB MARG - 0002

ELECTRICAL SCHEMATIC DRAWING NM 65 - 155



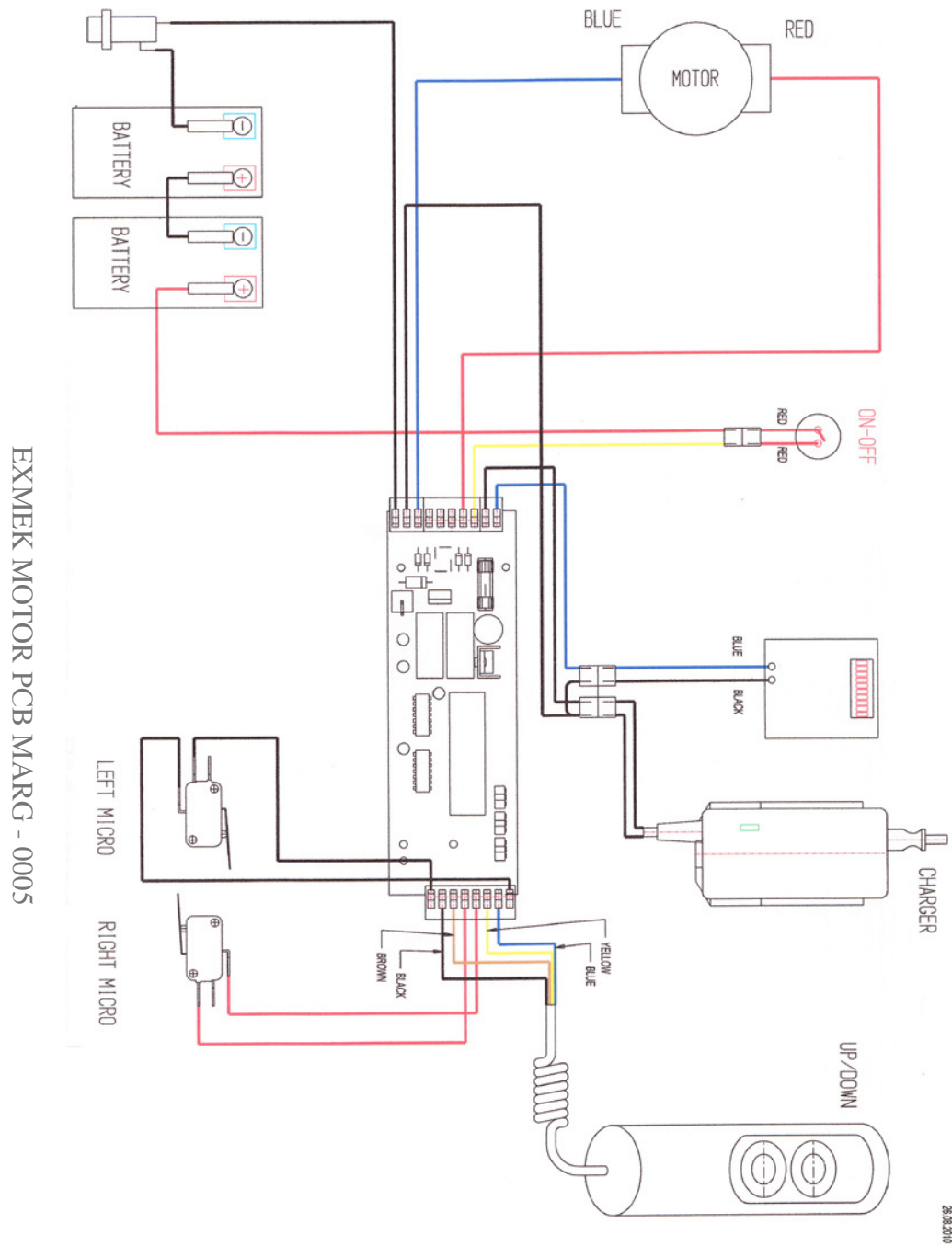
EXMEK MOTOR PCB MARG - 0002

ELECTRICAL SCHEMATIC DRAWING NM 65 - 155



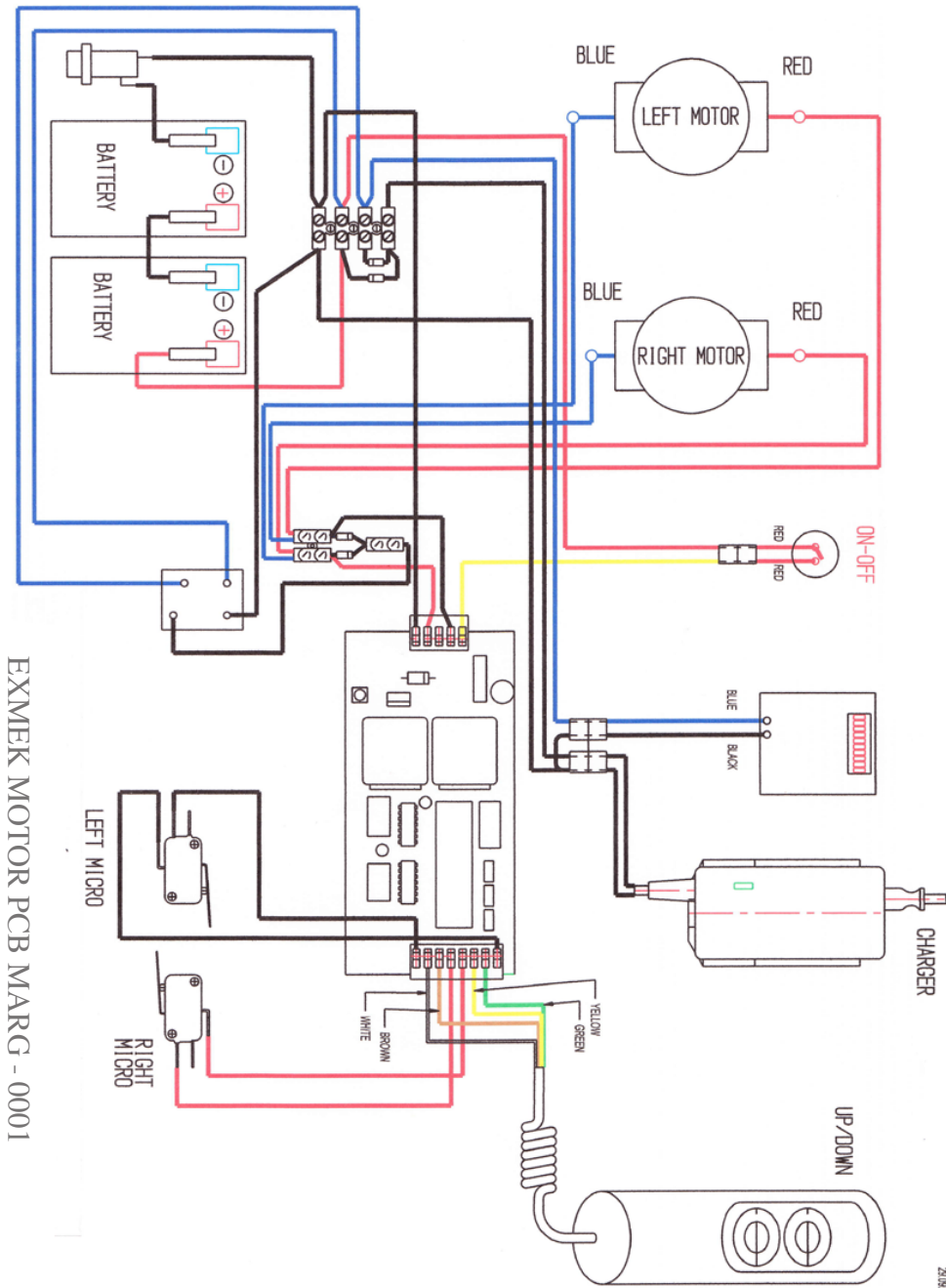
31/05/2008

ELECTRICAL SCHEMATIC DRAWING NM 65 - 155



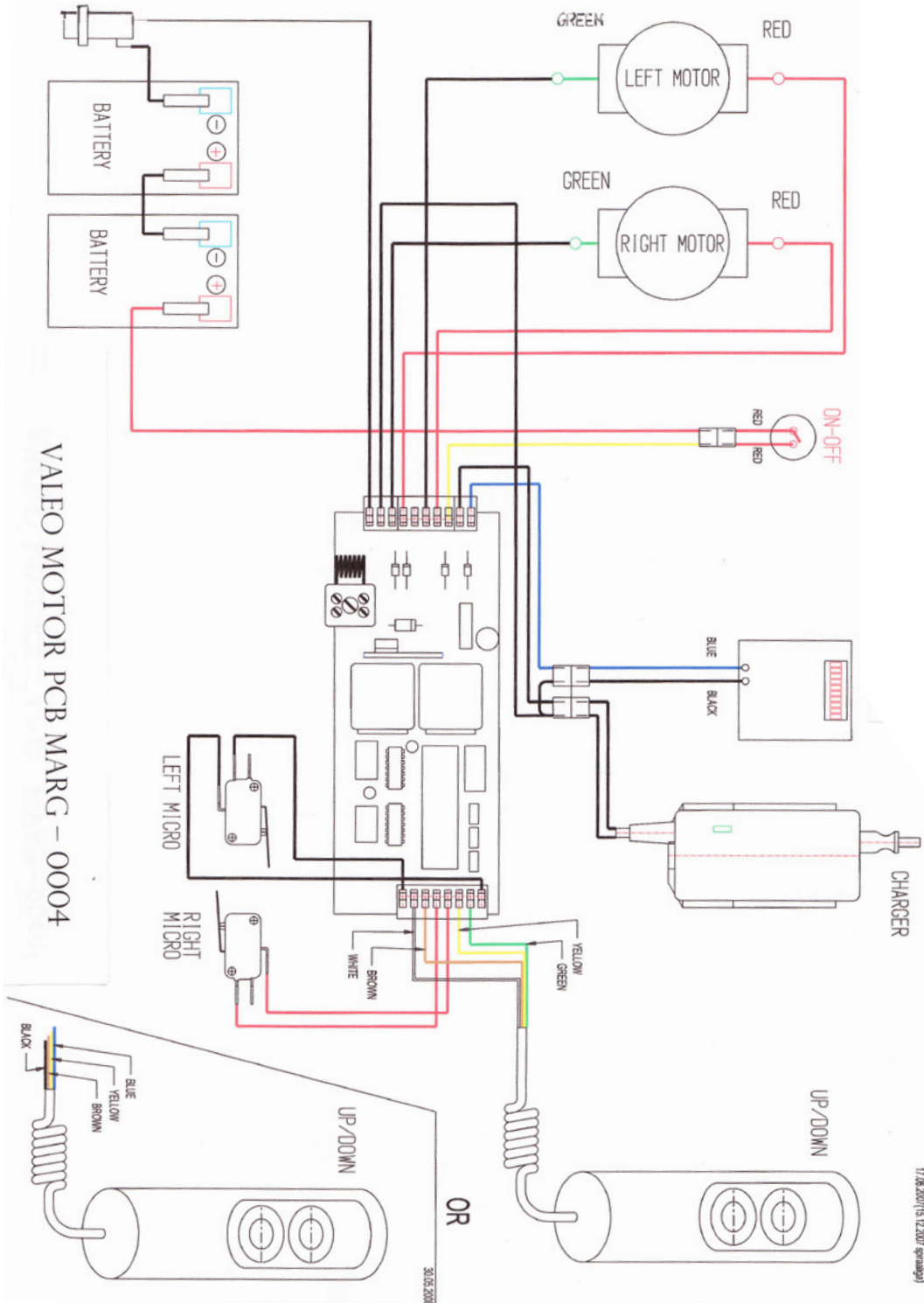
EXMEK MOTOR PCB MARG - 0005

ELECTRICAL SCHEMATIC DRAWING NM 205 - 250

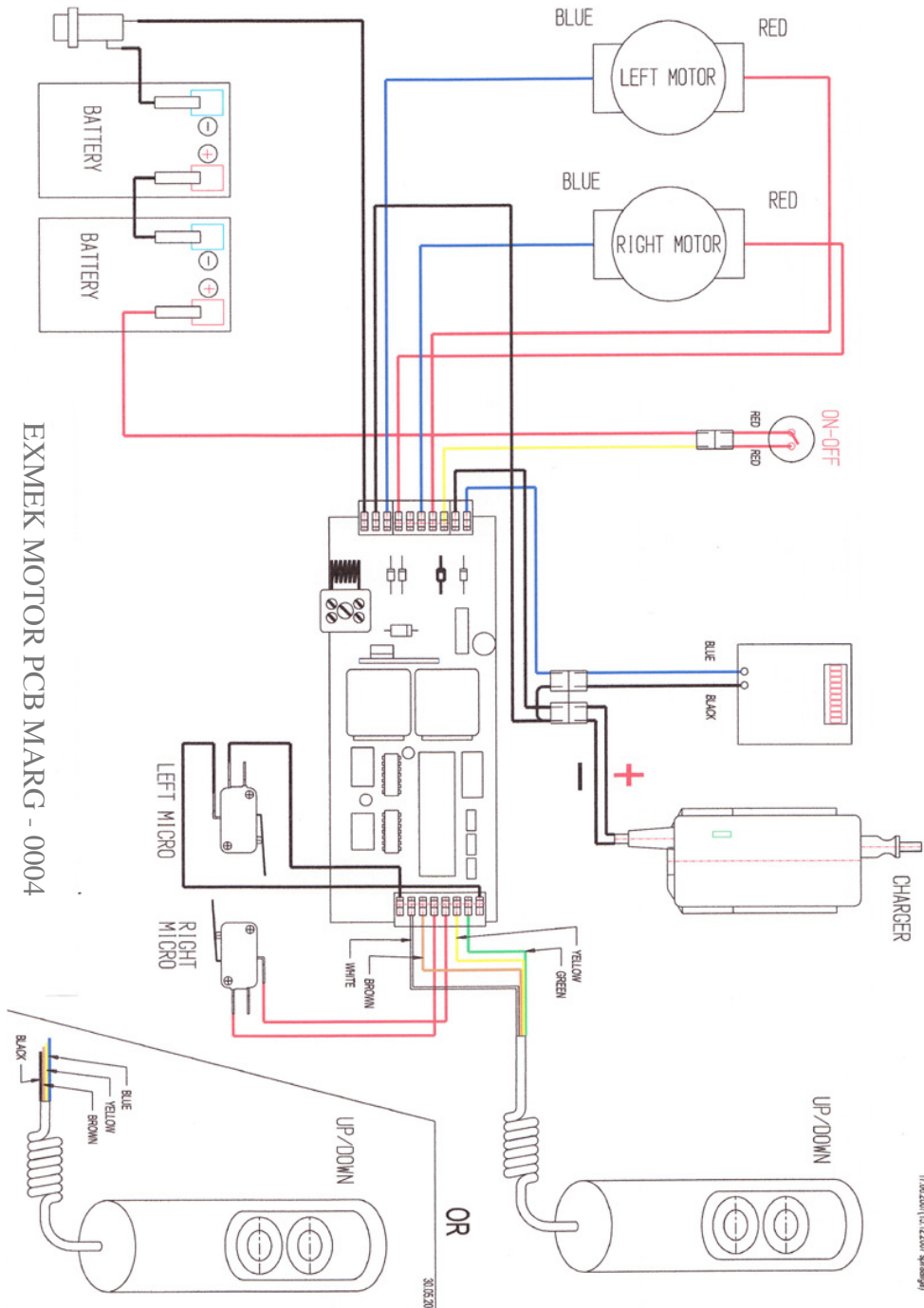


EXMEK MOTOR PCB MARG - 0001

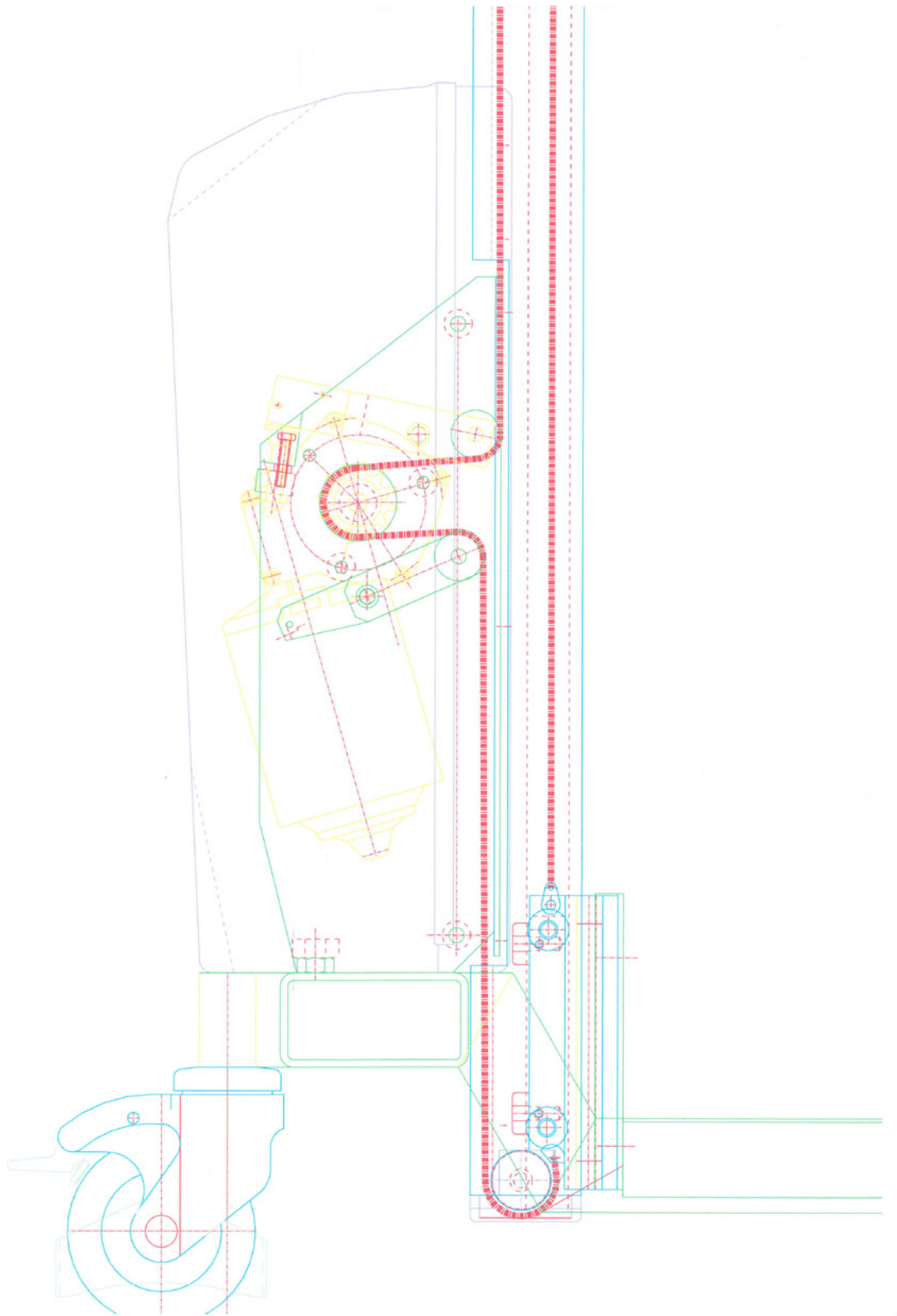
ELECTRICAL SCHEMATIC DRAWING NM 205 - 250



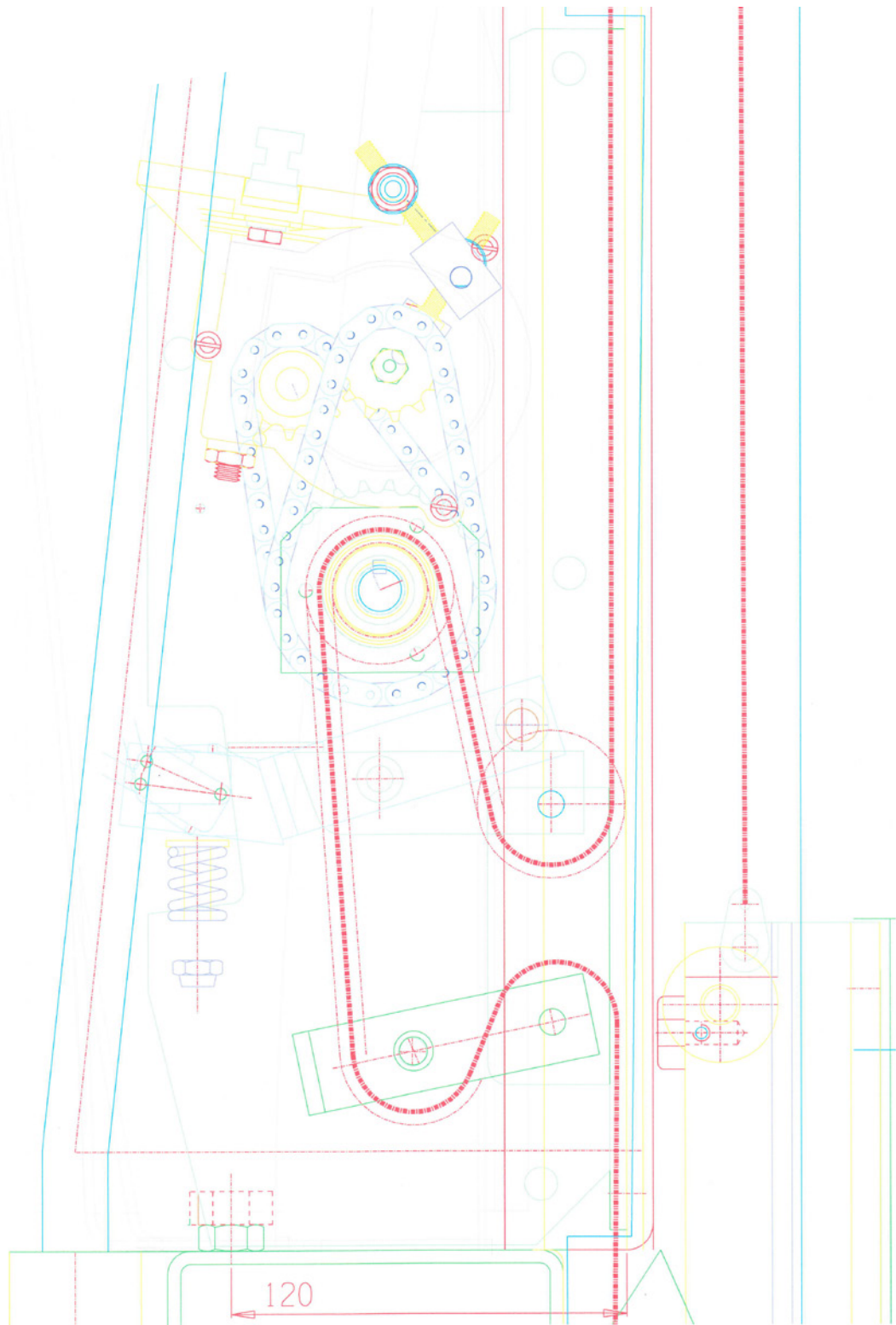
ELECTRICAL SCHEMATIC DRAWING NM 205 - 250



SCHEME OF CHAIN NM 65-105



SCHEME OF CHAIN NM 155-250

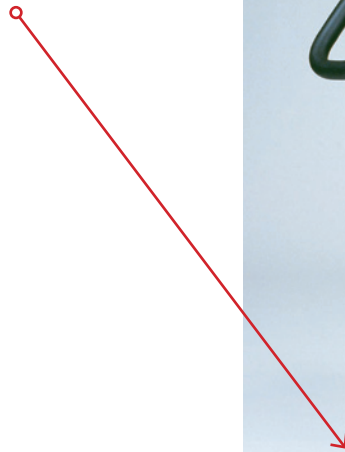


NOTE! IMPORTANT WHEN ORDERING SPARE PARTS

Before ordering spare parts, please have this serial number on hand. This minimizes wrong deliveries. You will find the number on the left side of the crossbeam below the housing cover. See picture below.

1 14 01 C 1 5

Year of manufacture 0 = 2010, 1 = 2011 ...	Week of manufacture	Number	Motor manufacturer C - CHINA, V - VALEO	Charger Model	PCB Model
---	---------------------	--------	--	---------------	-----------



SPARE PARTS - CHASSI

1.)	Chassis	65	60000C01
2.)		85	08000C01
3.)		105	00100C01
4.)		105 L	00100C01 L
5.)		155	00050C01
6.)		155 L	00050C01 L
7.)		205	00002C01
8.)	Engine bracket	65/85	68000C02
9.)		105	00100C02
10.)		155/205/250	00052C02
11.)	Mast	65	60000C03
12.)		85	08000C03
13.)		85 EM	08000C03E
14.)		105/155	00150C03
15.)		105 EM/155 EM	00150C03E
16.)		205	00002C03
17.)	Mast head	65 /85	68000C04
18.)		105/155/205	00152C04
19.)	Mast bottom	65/85	68000C05
20.)		105/155/205	00152C05
21.)	Handle	65/85/105/155/205/250	68152C06
22.)	Switch bracket	65/85/105/155/205/250	68152C07
23.)	Handle cap (plastic)	65/85/105/155/205/250	68152C08
24.)	Rubber protection for handle	65/85/105/155/205/250	68152C09
25.)	Support frame	155 EM/205	00052C10
26.)	Rear cover (plastic)	65/85	68000C11
27.)		105/155/205/250	00152C11
28.)	Engine cover	65/85	68000C12
29.)		105/155/205/250	00152C12
30.)	Battery indicator cover	65/85/105/155/205/250	68152C13
31.)	Charger cover	65/85/105/155/205/250	68152C14
32.)	Mast cap	65/85	68000C15
33.)		105/155/205	00152C15
34.)	Wheel STEINCO 75 w/ frame	65/85	68000C16
35.)	Wheel STEINCO 75	105 L	00100C17
36.)	Wheel STEINCO 80 w/ frame	105 /155	00150C18
37.)	Wheel STEINCO 80	155 L /205/250	00052C19
38.)	Wheel STEINCO 100 w/ frame/break	65/85	68000C20
39.)	Wheel STEINCO 125 w/ frame/break	105/155/205	00152C21
40.)	Mast seal	65/85/105/155/205	68152C22
41.)		85 EM/105 EM/155 EM	08150C22E
42.)	Box seal (engine cover)	65/85	68000C23
43.)		105/155/205/250	00152C23
44.)	Fork	65	60000C24
45.)		85	08000C24
46.)		105	00100C24
47.)		155	00050C24
48.)		205	00A02C24
49.)		250	00002C24

50.)	Plastic platform	65	60000C25
51.)		85	08000C25
52.)		105/155	00150C25
53.)		205/250	00002C25
54.)	Wheel (STEINCO) central brake	65/85	
55.)	Wheel (STEINCO) central brake	105/155/205	00152C21C
56.)	Central brake pedal	65/85	
57.)		105/155/205	

SPARE PARTS - TRANSMISSION

1.)	Chain 05B1 + lock	65/85	68000T01
2.)		85 EM	08000T01E
3.)		105	00100T01
4.)		105 EM	00100T01E
5.)	Gear chain 2 x NM 205	155/205	00002T01
6.)	Chain lock 05B1	65/85/105/155/205 /250	68152T02
7.)	Chain 06B1	105	00100T03
8.)		105EM	00100T03E
9.)		155	00050T03
10.)		155 EM	00050T03E
11.)		205	00002T03
12.)	Chain lock 06B1	105/155/205 /250	00052T04
13.)	Chain reel upper and lower (plastic)	65/85	68100T05
14.)	Chain reel lower (olastic)	155/205/250	00052T05
15.)	Chain reel upper (metal)	155/205 /250	00052T06
16.)	Chain tensioner reel	155/205/250	00052T07-1
17.)	Swing reel	65/85/105	68100T07
18.)	Cart	65/85	68000T08
19.)		105	00100T08
20.)		155	00050T08
21.)		205	00002T08
22.)	Cart axle	65/85	68000T09
23.)		105/155/205/250	00152T09
24.)	Cart rear axle	65/85/105/155/205/250	68152T10
25.)	Ball bearingqs	65/85	68000T11
26.)		105/155/205/250	00152T11
27.)	Cart rear roller	65/85	68000T12
28.)		105/155/205/250	00152T12
29.)	Chain hanger	65/85	68000T13
30.)		105	00100T13
31.)		155/205/250	00052T13
32.)	Sprocket 05B1 Z10	105	00100T14
33.)	Sprocket 05B1 Z11	105	00100T14-1
34.)	Sprocket 05B1 Z12	85/155/205	08052T14
35.)	Sprocket 05B1 Z15	65	60000T14
36.)	Sprocket 05B1 Z25	155/205	00052T14
37.)	Sprocket 06B1 Z10	105 (wk45/2012....)	00100T15

SPARE PARTS - TRANSMISSION

38.)	Sprocket 05B-1 Z14	205/250	00002T14
39.)	Sprocket 06B1 Z12	155/205	00052T15
40.)	Sprocket 05B-1 Z24	205/250	00002T14-2
41.)	Engine wedge 3*3,7 (VALEO)	65/85/105/155/205	68152T16
42.)	Engine wedge 3*5 (CHINA)	65/85/105/155/205/250	68152T16-1
43.)	Transmission wedge	155/205	00052T1 6
44.)	Transmission axle	155/205/250	00052T17
45.)	Transmission bearings	155/205/250	00025T18
46.)	Swing	65/85/105	68100T19
47.)		155/205/250	00052T19
48.)	Chain tensioner	65/85/105	68100T20
49.)		155/205/250	00052T20
50.)	Axle for wedge and tensioner reel	65/85/105	68100T21
51.)		155/205/250	00052T21
52.)	Swing axle	155/205/250	00052T22
53.)	Wedqe and tensioner stopper shim	65/85/105/155/205/250	68152T23
54.)	Lift capacity adjuster bolt	65/85/105/155/205/250	68152T24
55.)	Lift capacity adjuster spring	65/85/105	6E100T25
56.)		155/205/250	00052T25
57.)	Swing spring 0,75*6*40	65/85/105	68100T26
58.)	Tensioner spring 1.2*8*50	65/85/105/155/205/250	68152T26
59.)	Transmission chain tightener 05B1	155/205/250	00052T27
60.)	Chain connector	65/85/105 to 45/2012	68000T29
61.)		105 from 45/2012	00152T29

SPARE PARTS - ELECTRIC

1.)	Motor 24 Vdc 0.3 kW (Valeo)	65/85/105/155/205	68152E01-V
2.)	Motor 24 Vdc 0.3 kW (EXMEK)	65/85/105/155/205/250	68152E01
3.)	Battery 7.2 Ah	65/85/105/155	68150E02
4.)	Battery 12 Ah x 2	205/250	00002E02
5.)	Battery charger SA60-3015U	65/85/105/155/205/250	68152E03
6.)	Charging cable EUR	65/85/105/155/205/250	68152E04E
7.)	Charging cable GB	65/85/105/155/205/250	68152E04G
8.)	Charging cable AUT	65/85/105/155/205/250	68152E04A
9.)	Charging cable USA	65/85/105/155/205/250	68152E04U
10.)	PCB	65/85/105/155	68150E05
11.)		205/250	00002E05
12.)	PCB relay	205/250	00002E06
13.)	Battery indicator	65/85/105/155/205/250	68152E07
14.)	Main switch	65/85/105/155/205/250	68152E08
15.)	Ride switch	65/85/105/155/205/250	68152E09
16.)	Spiral cable for ride switch	65/85/105/155/205/250	68152E10
17.)	Ride switch + spiral cable	65/85/105/155/205/250	68152E11
18.)	Taw Diode 1N4007	65/85/105/155/205/250	68152E14
19.)	Microswitch	65/85/105/155/205/250	68152E15
20.)	Fuse holder	65/85/105/155/205/250	68152E16
21.)	Fuse 25A	65/85/105/155/205/250	68152E17
22.)	Battery connecting wire	65/85/105	68100E18
23.)		155/205/250	00012E19



DECLARATION OF CONFORMITY

Manufacturer:
 NEW MECHANIC
 City Forum
 Florinis Street 11, Office 102
 Nicosia 1065, CYPRUS
 Mobile: +46-70-595 65 75
 Mail: heino@newmec.se

SE Försäkrar under eget ansvar att produkten som omfattas av denna försäkran är i överensstämmelse med **EG maskindirektiv 98/37/EG**.
 Följande standards har beaktats vid konstruktion:

EN ISO 3691-5:2009	Lyftvagn
EN 60204-1	Maskinsäkerhet – Maskiners el utrustning – Allmänna fordringar
EMC-2004/108/EC	Elektromagnetisk kompatibilitet
RoHS-direktiv 2002/95/EG	Begränsning av användningen av vissa farliga ämnen i elektriska och elektroniska produkter.

GB Declare under our sole responsibility that the product to which this declaration relates is in conformity with **The Machine Directive 98/37/EG**.

EN ISO 3691-5:2009	Lifting Trolley
EN 60204-1	Safety of Machinery – Electrical Equipment of Machines – General Requirements.
EMC-2004/108/EC	Electromagnetic compatibility.
RoHS-directive 2002/95/EC	Restriction of the use of Certain Hazardous Substances in Electrical and Electronic Equipment













FI Vakuutamme omalla vastuullamme, että seuraava tuote johon tämä vakutus liittyy on tämän standardin ja normin mukainen: **EU:n konendirektiivi 98/37/EG**.
 Alla olevat standardit on otettu huomioon konstruktionissa:

EN-ISO 3691-5:2009	Käsin siirrettävät trukit
EN 60204-1	Koneiden turvallisuus – Koneiden sähköosat – Yleiset vaatimukset
EMC-2004/108/EY	Sähkömekaaninen yhteensopivuus
RoHS-direktiivi 2002/95/EY	Tiettyjen vaarallisten aineiden käytön rajoittamista sähkö- ja elektroniikkalaitteissa

Product, manufacturing number:

Place and date:.....

H. Pyylampi, Managing Director:

POS	ART. NUMBER	PART	PICTURE
3	68152E09	RIDE SWITCH	
4	68152E04E	CHARGING CABLE for 220V	
5	68152E08	MAIN SWITCH	
6	00002E05	MAIN BOARD	
8	68152C13	PLASTIC COVER	
8	68152E07	CHARGING INDICATOR	
9	68152E03	CHARGER 1.5A	
10	68152E01	Motor 24V	
12	68150E02	Battery 24V, 7,2Ah (2 x 12V)	
18	68000C16	FRONT WHEELS Ø 75mm	
19	68000C20	REAR WHEELS Ø 100 including breaks and direction lock	
23	68000T01	TRANSMISSION CHAIN	
	68152T02	CHAIN LOCK	